

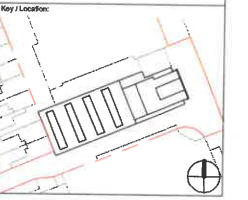
**Disclaimer:**  
Do not scale from this drawing.  
Check all dimensions on site before fabrication or setting out. This document is copyright and may not be reproduced without permission of the owner.  
Ordinance Survey data contained herein is for use on this project only. Third parties involved in this project wishing to reproduce this data for the purposes of said project, may do so on condition of the following:  
© Crown Copyright All rights reserved 2010 License No 0100031673  
Notes:

Areas have been calculated in accordance with the BS5839/A code of Measuring Practice (8th edition, 2007) using the stated options MEA, OIA and OEA (ground floor OEA excludes external carle and refuse stores)  
Any decisions to be made on the basis of these predictions, comparisons and the like, should make due allowance for fluctuations arising from the following: design development, accurate site survey, site levels and site dimensions, construction method and building tolerances, Local Authority and Statutory comments

Information Exchange 1:	Information Exchange 2:
Information Exchange 3:	Information Exchange 4:

Rev	Notes	Date	Drawn	Issued
A	INFORMATION	03.02.2022	MP	BT

Consultants:



**FLANAGAN LAWRENCE**  
58 Pynchon Road, London, W2 8BT  
T +44 (0) 20 7708 6466 F +44 (0) 20 7707 4266  
www.flanaganolawrence.com E info@flanaganolawrence.com

Client:  
Dorsett Hospitality International

Purpose of Issue:  
**LICENCING**

Project:  
56 Shepherds Bush Green

Drawing Title:  
**BASEMENT PLAN LICENCING**

Drawn By: MP Issued By: BT Date of First Issue: 03.02.2022

Project No: 15-040 Scale @: As Indicated  
Drawing No: 1001-A-FLA-DRG-01-B1-0099 Revision: A

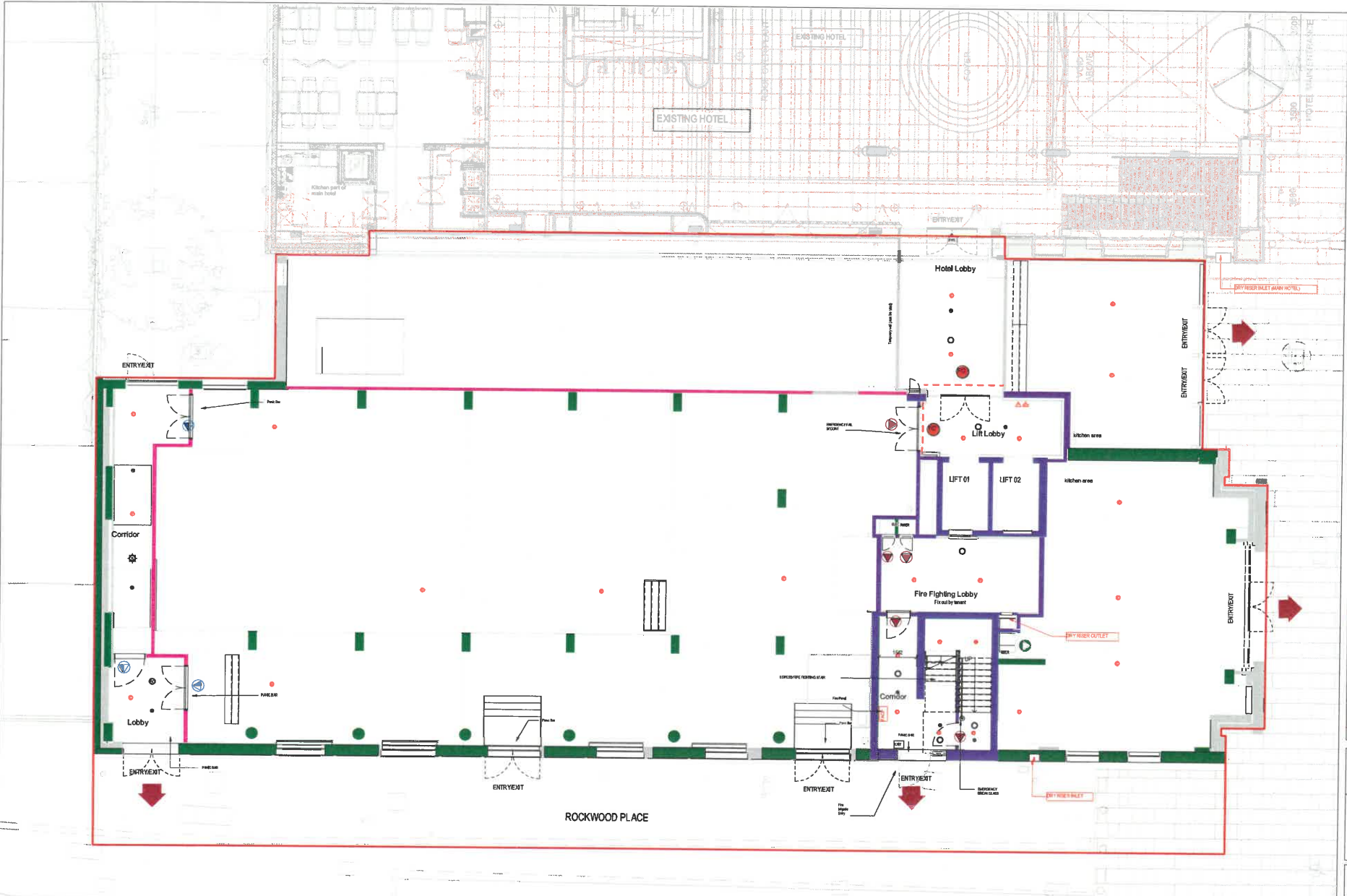
1 | Basement  
1:75

The location and type of any fire safety and any other safety equipment is shown as at present. This may be varied from time to time with the agreement of the Fire Officer or after a fire risk assessment.

Anything shown on this plan which is not required by the Plan Regulations is for illustrative purposes only, and does not form part of the Premises Licence

	Minimum 20 mins fire compartmentation integrity and protection. Minimum 30 mins fire resistance above stairs and space not accessible.		Fire Emergency Exit		Workshop Ridge		Third Hand Sprinkler Head		Emergency Light Fix
	Minimum 60 mins fire compartmentation integrity and protection. Minimum 30 mins fire resistance above stairs and space not accessible.		F12356 20 min fire resisting door with smoke and heat insulation		LED Emergency Exit Sign		Third Hand Sprinkler Head		Emergency Light Fix
	Minimum 60 mins fire compartmentation integrity and protection. Minimum 30 mins fire resistance above stairs and space not accessible.		F12356 60 min fire resisting door with smoke and heat insulation		Smoke Detector		Third Hand Sprinkler Head		Emergency Light Fix
	Minimum 120 mins fire compartmentation integrity and protection. Minimum 30 mins fire resistance above stairs and space not accessible.		F12356 60 min fire resisting door with smoke and heat insulation		Carbon Dioxide Smoke Detector		Third Hand Sprinkler Head		Emergency Light Fix
	Minimum 30 min fire compartmentation		F12356 120 min fire resisting door with smoke and heat insulation		Fire Alarm Battery		Third Hand Sprinkler Head		Emergency Light Fix

NOTE: THIS DRAWING WAS PRODUCED IN COLOUR AND SHOULD BE PRINTED IN COLOUR

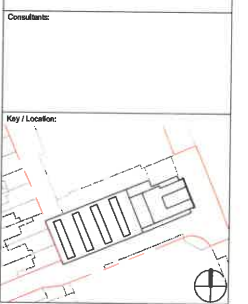


**Disclaimer:**  
Do not scale from this drawing.  
Check all dimensions on site before fabrication or setting out. This document is copyright and may not be reproduced without permission of the owner.  
Information Survey data contained herein is for use on this project only. Third parties involved in this project wishing to reproduce this data for the purposes of a sub-project, may do so on display of the following:  
© Crown Copyright All rights reserved 2010 License No 0100031874

**Notes:**  
Areas have been calculated in accordance with the RICE84/VA code of Measuring Practice, (RHS edition, 2007) using the stated options MA, GA and GCA ground floor CE/A includes external yards and refuse stores  
Any decisions to be made on the basis of these predictions, whether as to project viability, pre-letting, lease agreements, consents and the like, should make due allowance for fluctuations arising from the following: design development, accurate site survey, site levels and site dimensions, construction method and building tolerances, Local Authority and Statutory consents

Information Exchange 1:	Information Exchange 2:
Information Exchange 3:	Information Exchange 4:

Rev:	Notes:	Date:	Drawn:	Check:
A	INFORMATION	03.02.2022	MP	BT
B	INFORMATION	04.02.2022	MP	BT



**FLANAGAN LAWRENCE**  
85 Fenchurch Road, London, EC3A 8BT  
T: +44 (0) 20 7786 9166 F: +44 (0) 20 7787 0266  
www.flanaganolawrence.com E: info@flanaganolawrence.com

Client:  
Dorset Hospitality International

Purpose of Issue:  
**LICENCING**

Project:  
56 Shepherds Bush Green

Drawing Title:  
GROUND FLOOR PLAN LICENCING

Drawn By: MP Issued By: BT Date of First Issue: 03.02.2022

Project No: 15-040 Scale @ A1: As Indicated

Drawing No: 1001-AFLA-DRG-01-00-01-00 Revision: B

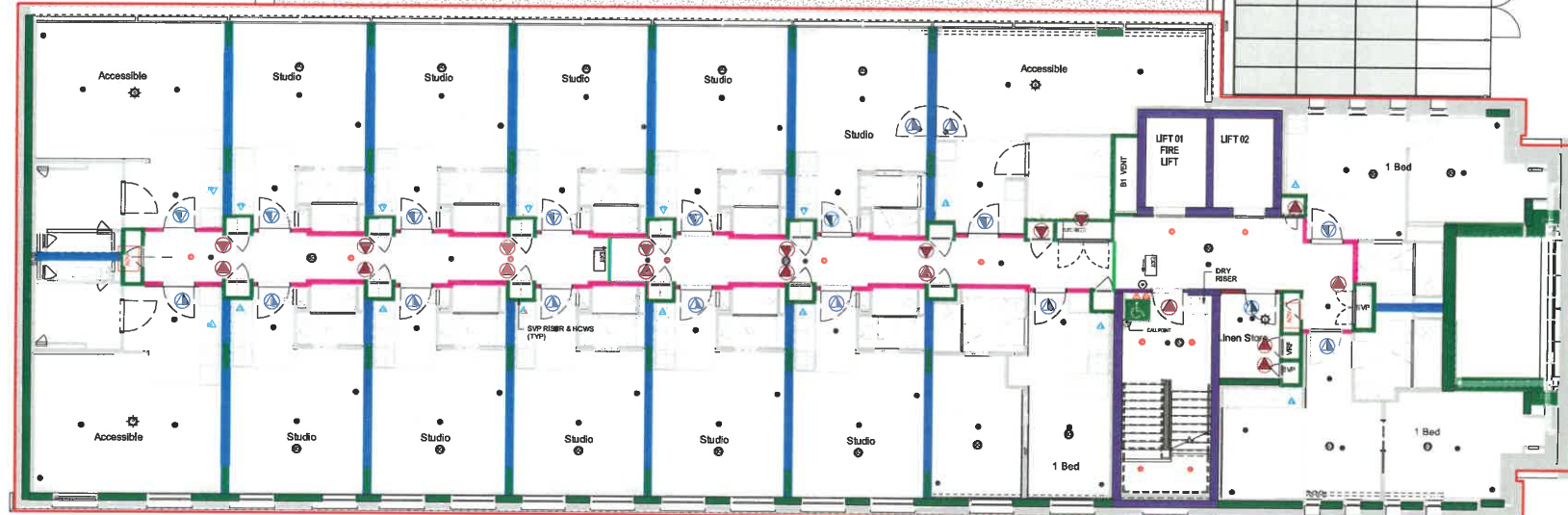
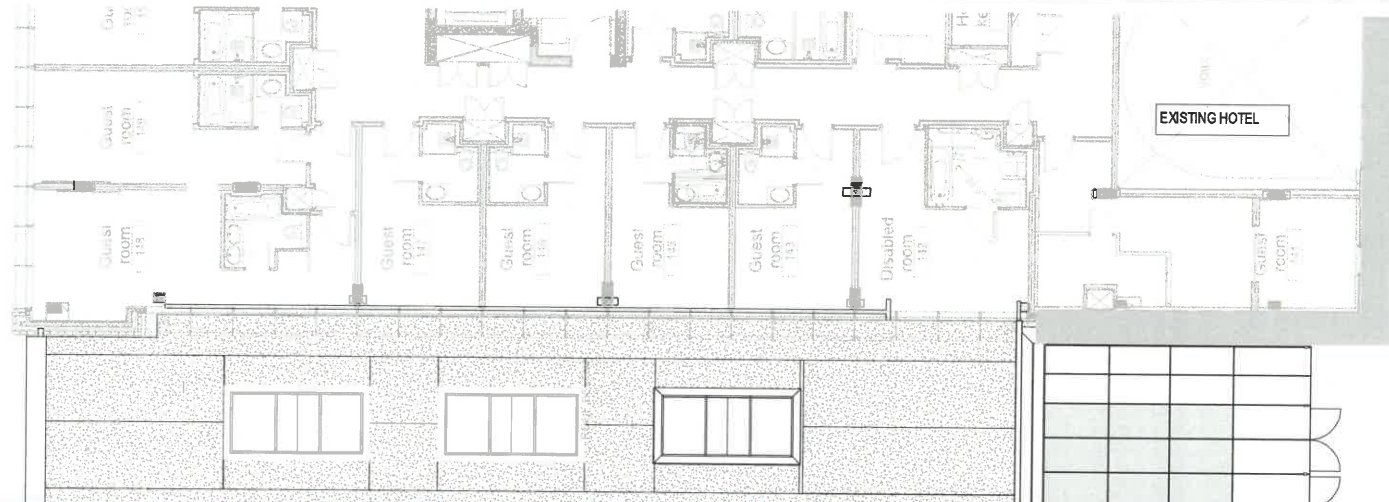
1 Ground Floor  
1:75

The location and type of any fire safety and any other safety equipment is shown as at present. This may vary from time to time with the agreement of the Fire Officer or after a fire risk assessment.

Anything shown on this plan which is not required by the Plan Regulations is for illustrative purposes only, and does not form part of the Premises Licence

Minimum 20 mins for compartmentation, integrity and stability. All doors, doors etc. shall be marked by fireman's compartmentation.	Fire Emergency Exit	Window Fall	Main Exit Signpost Head
Minimum 60 mins for compartmentation, integrity and stability. All doors, doors etc. shall be marked by fireman's compartmentation.	F1038 20 min for the building door with smoke seal and fireman's compartmentation	EXIT	Smoke Glass or other safety glass
Minimum 30 mins for compartmentation, integrity and stability. All doors, doors etc. shall be marked by fireman's compartmentation.	F1038 60 min for the building door with smoke seal and fireman's compartmentation	Fire Alarm	Fire Alarm (Zone)
Minimum 15 mins for compartmentation, integrity and stability. All doors, doors etc. shall be marked by fireman's compartmentation.	F1038 90 min for the building door with smoke seal and fireman's compartmentation	Smoke Detector	Fire Alarm (Zone)
Minimum 30 mins lobby buffer	F1038 120 min for building door with smoke seal and fireman's compartmentation	Combined Smoke/Heat Detector	Fire Alarm (Zone)
	F1038 120 min for building door with smoke seal and fireman's compartmentation	Fire Alarm	Fire Alarm (Zone)

NOTE: THIS DRAWING HAS BEEN PRODUCED BY OUR OWN AND SHOULD BE PRINTED AND COPIED IN COLOUR



**1 | LEVEL 01 (1ST FLOOR)**  
1:75

The location and type of any fire safety and any other safety equipment is shown as at present. This may be varied from time to time with the agreement of the Fire Officer or after a fire risk assessment.

Anything shown on this plan which is not required by the Plan Regulations is for illustrative purposes only, and does not form part of the Premises Licence

KEY			
Minimum 20mm fire compartmentation - integrity and smokestop. 45 mins, assembly when fire is in building compartmentation.	Fire Emergency Exit	Wheelchair Access	Water Mist Sprinkler Head
Minimum 30mm fire compartmentation - integrity and smokestop. 45 mins, assembly when fire is in building compartmentation.	F2000 20 min fire resisting door with smoke and sound insulation stop	EXIT	Break Glass or other activation in order
Minimum 30mm fire compartmentation - integrity and smokestop. 45 mins, assembly when fire is in building compartmentation.	F2000 30 min fire resisting door with smoke and sound insulation stop	LIFT Emergency Call Stop	Fire Detector
Minimum 120mm fire compartmentation - integrity and smokestop. 45 mins, assembly when fire is in building compartmentation.	F2000 60 min fire resisting door with smoke and sound insulation stop	Combined Smoke/Heat Detector	Fire Extinguisher (Water)
Minimum 20mm fire barrier	F2000 120 min fire resisting door with smoke and sound insulation stop	Fire Alarm Repeater	Fire Callpoint (or Call Point Device)
Accessible	Studio	Fire Alarm Control Device	Emergency Light Points
Studio	Studio	Fire Alarm Control Device	Cords/leads in soffits
Studio	Studio	Fire Alarm Control Device	Fire Extinguisher (Water)
Studio	Studio	Fire Alarm Control Device	FIRE/ALARM/EMERGENCY ACTIVATES

NOTE: THIS DRAWING WAS PRODUCED BY CGA CLM AND SHOULD BE PRINTED AND COPIED IN COLOUR

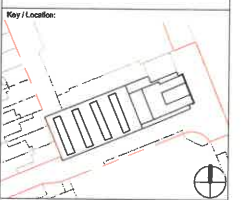
Disclaimer:  
Do not scale from this drawing.  
Check all dimensions on site before fabrication or setting out. This document is copyright and may not be reproduced without permission of the owner.  
Ordinance Survey data contained herein is for use on this project only. Third parties involved in this project warrant to represent this data for the purposes of said project, may do so on display of the following:  
© Crown Copyright All rights reserved 2010 Licence No 0100018763

Notes:  
Areas have been calculated in accordance with the RCB/BSVA code of Measuring Practice, (8th edition, 2007) using the stated options MA, CA and GFA (ground floor) GFA includes external cycle and refuse areas  
Any decisions to be made on the basis of these provisions, whether as to project viability, pre-letting, lease agreements, consequences and the like, should make due allowance for fluctuations arising from the following: design development, accessible site survey, site levels and site dimensions, construction method and building tolerances, Local Authority and Statutory consents

Information Exchange 1:	Information Exchange 2:
Information Exchange 3:	Information Exchange 4:

Rev	Notes	Date	Drawn	Check
A	INFORMATION	03.02.2022	MP	BT
B	INFORMATION	04.02.2022	MP	BT

Consultants:



**FLANAGAN LAWRENCE**  
45 Parkside Road, London, W2 6BT  
T: +44 (0) 20 7786 6146 F: +44 (0) 20 7787 0266  
www.flanaganolawrence.com  
l.lawrence@flanaganolawrence.com

Client:  
Dorsett Hospitality International

Purpose of Issue:  
**LICENCING**

Project:  
58 Shepherds Bush Green

Drawing Title:  
**LEVEL 01 (1ST FLOOR)  
LICENCING**

Drawn By:  
MP

Issued By:  
BT

Date of First Issue:  
03.02.2022

Project No:  
15-040

Scale @ A1:  
As indicated

Drawing No:  
1001-AFLA-DRG-01-01-0101

Revision:  
B

Disclaimer:  
 Do not scale from this drawing  
 Check all dimensions on site before fabrication or setting out. This document is copyright and may not be reproduced without permission of the owner.  
 Evidence Survey data contained herein is for use on this project only. Their parties involved in this project relating to reproduction this data for the purposes of said project, may do so on display of the following:  
 © Crown Copyright All rights reserved 2010 Licence No. 100021072

Notes:  
 Areas have been calculated in accordance with the RICS/BSVA Code of Measuring Practice (8th edition, 2007) using the standard software NFA, GSA and GEA (Ground Floor GSA includes external cycle and refuse areas)  
 Any decisions to be made on the basis of these predictions, whether as to project viability, pre-letting, lease agreements, conveyances and the like, should make due allowance for fluctuations arising from the following: design development, accurate site surveys, site levels and site dimensions, construction method and building tolerances, Local Authority and Statutory consents

Information Exchange 1: Information Exchange 2:  
 Information Exchange 3: Information Exchange 4:

Rev:	Notes:	Date:	Drawn:	Iss:
A	INFORMATION	03.02.2022	MP	BT
B	INFORMATION	04.02.2022	MP	BT

Consultants:

Key Location:

**FLANAGAN LAWRENCE**  
 65 Shepherd Walk, London, W2 8ET  
 T: +44 (0) 20 7705 0308 E: info@flanaganlawrence.com  
 www.flanaganlawrence.com  
 Client: Dorsett Hospitality International

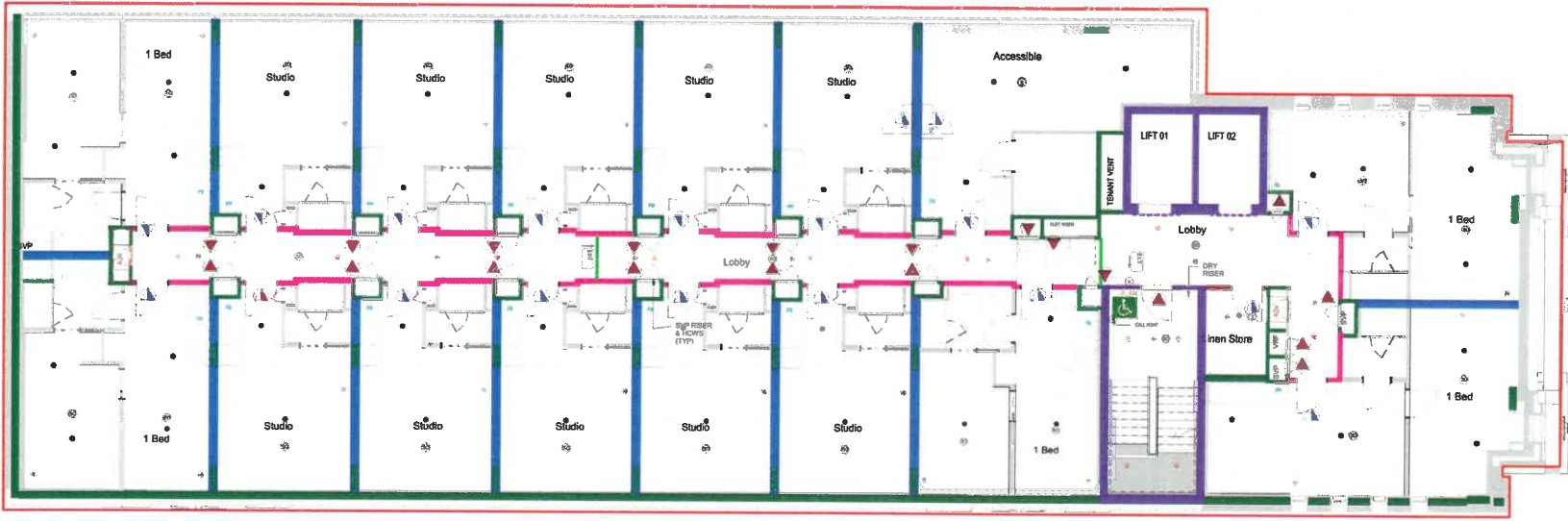
Purpose of Issue:  
**LICENCING**

Project:  
 56 Shepherds Bush Green

Drawing Title:  
**LEVEL 02 [2ND FLOOR] LICENCING**

Drawn By: MP	Issued By: BT	Date of First Issue: 03.02.2022
Project No: 15-040	Scale @ A1: As indicated	Revision: B

Drawing No:  
1001-A-FLA-DRG-01-02-0102



1 LEVEL 02 [2ND FLOOR]  
 1:75

The location and type of any fire safety and any other safety equipment is shown as at present. This may be varied from time to time with the agreement of the Fire Officer or after a fire risk assessment.

Anything shown on this plan which is not required by the Plan Regulations is for illustrative purposes only, and does not form part of the Premises Licence

KEY			
Maximum 20 mm for construction (e.g. edge) of fire door, window or other fire-resisting construction	Fire Emergency Exit	Wheelchair Access	Fire Risk Spot-check
Maximum 10 mm for compartmentation, integrity and insulation. (Other symbols are within the fire-resisting construction)	Fire Escape	Fire Escape Exit Door	Fire Alarm
Minimum 10 mm for compartmentation, integrity and insulation. (Other symbols are within the fire-resisting construction)	Fire Escape Exit Door	Fire Escape Exit Door	Fire Alarm Control Panel
Minimum 10 mm for compartmentation, integrity and insulation. (Other symbols are within the fire-resisting construction)	Fire Escape Exit Door	Fire Escape Exit Door	Fire Alarm Control Panel
Maximum 10 mm (see note)	Fire Escape Exit Door	Fire Escape Exit Door	Fire Alarm Control Panel
Maximum 20 mm for construction (e.g. edge) of fire door, window or other fire-resisting construction	Fire Emergency Exit	Wheelchair Access	Fire Risk Spot-check
Maximum 10 mm for compartmentation, integrity and insulation. (Other symbols are within the fire-resisting construction)	Fire Escape	Fire Escape Exit Door	Fire Alarm
Minimum 10 mm for compartmentation, integrity and insulation. (Other symbols are within the fire-resisting construction)	Fire Escape Exit Door	Fire Escape Exit Door	Fire Alarm Control Panel
Minimum 10 mm for compartmentation, integrity and insulation. (Other symbols are within the fire-resisting construction)	Fire Escape Exit Door	Fire Escape Exit Door	Fire Alarm Control Panel
Maximum 10 mm (see note)	Fire Escape Exit Door	Fire Escape Exit Door	Fire Alarm Control Panel

NOTE: THIS DRAWING IS NOT REPRODUCED IN COLOUR AND SHOULD BE PRINTED IN A CONTRASTY COLOUR